

## Additional (2nd) 2019-2020 Fiscal Year (FY) Renewal Guidance ODP Announcement 19-051

### AUDIENCE:

Administrative Entities (AEs), Supports Coordination Organizations (SCOs), Supports Coordinators (SCs) All Direct Service Providers (Waiver and Base Providers), and Other Interested Parties

### PURPOSE:

This Office of Developmental Program (ODP) communication is intended to provide additional guidance to AEs, SCOs, and direct service providers related to the new service definitions, provider service offerings for new services, contract creation for new services, and P/FDS cap exceptions for FY 2019-2020.

### DISCUSSION:

ODP issued Announcement “19-030: 2019-20 Fiscal Year (FY) Renewal Guidance” on March 10, 2019. This is a second communication that is intended to provide clarification on how new services are treated in HCSIS. The communication also addresses P/FDS cap exceptions and the rate load. There are three (3) Appendices in this communication. They are as follows:

- APPENDIX A: HCSIS Behavior for New Services (Diagram)
- APPENDIX B: Services Considered “New” in HCSIS for Fiscal Year 2019-2020
- APPENDIX C: Employment Services Specialty Changes for FY 2019-2020

### The following are treated as “new” services in HCSIS:

- When a new provider type/specialty combination is added to an existing service in HCSIS (*i.e. For FY 2019-2020, this applies to most employment services*);
- When a previously used procedure code is end-dated then re-added to HCSIS with a different service name (*i.e. For FY 2019-2020, this applies to the CPS services that were previously 100% community in FY 2018-2019 and Homemaking services*); or
- When a completely new procedure code is added to HCSIS (*i.e. For FY 2019-2020, this applies to all new CPS facility services and the new Chore service*).

**SEE APPENDIX A for a diagram that illustrates HCSIS’s behavior as it applies to “new” services.**

### Automated Creation of Provider Service Offerings for “New” Services:

1. When a service is considered “new” in HCSIS, a provider service offering needs to be created before its available for SC selection. Service offerings are typically created manually by

providers; however, the HCSIS technical vendor agreed to automate service offering creation one-time for a group of services considered “new” to HCSIS. The result of this automation will be visible in HCSIS on May 9, 2019. The following criteria will be used when creating service offerings:

- For the new CPS services:
    - Provider service offerings will be created for all new CPS Community services if a service offering was active for CPS 100% services during FY 2018-2019.
    - Provider service offerings will be created for all CPS Facility services if the provider had an active service offering for the same provider type (51) and specialty (514 or 515) associated with the new CPS Facility codes during FY 2018-2019.
    - Provider service offerings will be created for all CPS Community and Facility services that are associated with specialty 525 **IF** the provider has the same specialty enrolled on their service location by May 7, 2019. If providers are enrolled for specialty 525 after May 7, 2019, they will need to manually create service offerings for these services.
  - Homemaker and Chore Services:
    - Providers who had active service offerings for Homemaker/Chore Services during FY 2018-2019, will receive FY 2019-2020 service offerings for the new Homemaker service and Chore service.
  - Employment Services:
    - Providers who have the new FY 2019-2020 specialty(s) enrolled on their MPI and Service Location by May 7, 2019, will have a service offering created for all the employment services associated with that provider type and specialty. Specialty(s) enrolled after May 7, 2019 will require the provider to manually create a service offering.
    - See Appendix C for a side-by-side of the FY 2018-2019 provider type and specialty combinations and the new FY 2019-2020 provider type and specialty combinations associated with each of the employment Services.
2. A service offering can only be created when the provider is enrolled with the same specialty that is associated with the service. **The universe of service offerings that will be created is limited to the service locations already enrolled with the associated service specialty as of May 7, 2019. Providers will need to manually create service offerings for any specialties enrolled after May 7, 2019.**
  3. See Appendix B for all services, considered “new” by HCSIS, in which Service Offerings will need to be created.

### **Contract Creation and “New” Services:**

- Once a service offering is created, the SC will see and be able to select the service to add to plans; however, the service will be uncontracted until after the rate load (anticipated between May 15, 2019 – May 20, 2019).
- Contracts can only be created if the provider has been qualified for the specialty associated with the service.
- Certain ODP staff have the ability to manually create contracts; however, the HCSIS technical vendor, Deloitte, agreed to create contracts for what HCSIS considers “new” services, primarily due to the high volume of contracts that will need to be created.
- The automated contract creation process is anticipated to begin on May 15, 2019 and will continue to run daily for new services.
- FYI: For existing services, the activity to convert provisional on hold contracts to real will begin on May 17, 2019 and will run every Friday thereafter.

**NOTE: If the FY 2019-2020 Renewal plan was already created, it is highly likely the ISP will need to be adjusted if any of the services already added to plans are considered “new” by HCSIS.**

**NOTE:** If a provider wants to create a new service offering for FY 2018-2019 for a service that was end-dated for 6/30/2019, ODP will need to submit an incident to get the service offering added in order for the service itself to be added to FY 2018-2019 plans. Please reach out to you ODP Field Support Lead for incident requests.

### **P/FDS INDIVIDUAL CAP EXCEPTIONS**

---

**Approved Individual Cap Exceptions Will Continue:** Individuals who are currently approved for a P/FDS cap exception and are still enrolled in the P/FDS waiver will continue to be exempt from the P/FDS cap for FY 2019-2020. The exception process is intended to preserve the service plan (the types and amount of service) as it existed on June 30<sup>th</sup>, 2019. Individuals approved for the exception cannot have services added, expanded or authorized that would result in exceeding their approved individual exception cap.

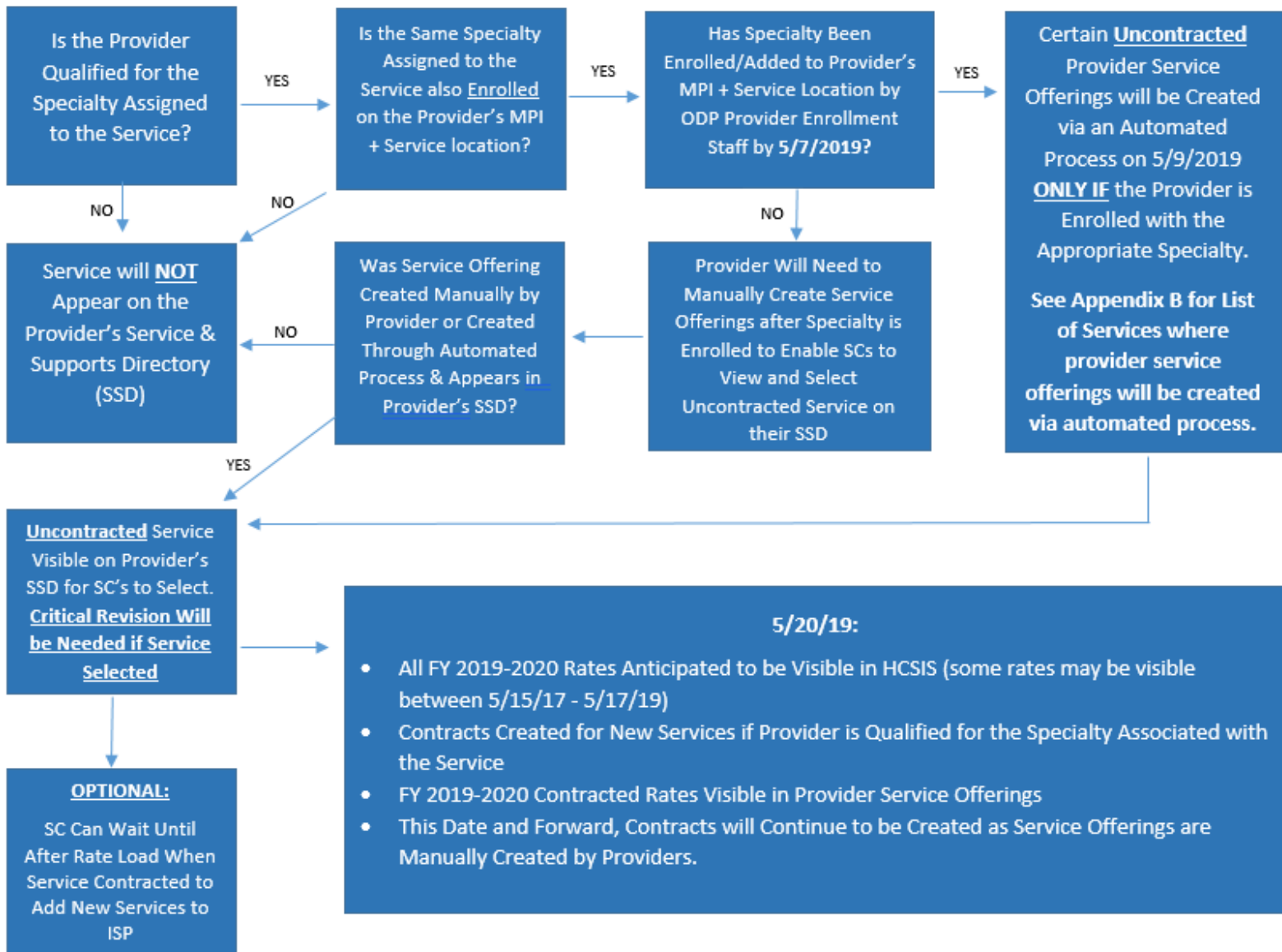
**Cap Exceptions for Community Participation Supports (CPS) or Transportation Trip:** When an ISP is projected to exceed the P/FDS cap as a direct result of rate changes to CPS services or Transportation Trip, a request for an exception can be made to ensure there is no reduction in services.

- P/FDS Cap exceptions should be identified by the ISP team and a request should be submitted to the AE.
- The AE will submit exception requests to their ODP designated Regional Office for review and approval. ODP approvals will be communicated to the AE.

- Once an approval is made, ODP will update individual records in HCSIS to allow for approved individuals to exceed the P/FDS cap and communicate to AEs when this task has been completed.
- Upon review and validation, AEs may authorize up to each individual's cap exception.
- Due to the auto authorization functionality within HCSIS, SCs should mark plans for *manual review* when an annual plan or critical revision to a plan is approved for an individual cap exception. AEs will conduct manual reviews of ISPs to ensure that the approved cap is not exceeded. AEs should identify and report to their designated Regional Office anyone that no longer needs an individual exception.

**Annualized Amounts:** The approved individual cap exception annualized amount should not be exceeded for FY 2019/2020.

**APPENDIX A: HCSIS BEHAVIOR FOR NEW SERVICES**



**APPENDIX B: SERVICES CONSIDERED “NEW” IN HCSIS FOR FISCAL YEAR 2019-2020**

**Uncontracted service offerings will be created for all services in the table below IF the provider is enrolled with the same specialty that is associated with the service as of May 7, 2019. Specialties enrolled after May 7, 2019, will require that providers manually create applicable service offerings. Services highlighted in green below WILL NOT have service offerings created.**

HCSIS Service Name FY 2018/2019	HCSIS Service Name FY 2019/2020	Procedure Code	Mod 1	Mod 2	Provider Type	FY 18-19 Specialty	FY 19-20 Specialty	Effective Date
N/A	Adv Supp Emplmnt-Discovery	W7235	UD	00	53	530	534	7/1/2019
N/A	Adv Supp Emplmnt-Discovery-ECS	W7235	UD	U1	53	530	534	7/1/2019
N/A	Adv Supp Emplmnt-Job Acquisition	H2023	UD	00	53	530	534	7/1/2019
N/A	Adv Supp Emplmnt-Job Acquisition-ECS	H2023	UD	U1	53	530	534	7/1/2019
N/A	Adv Supp Emplmnt-Job Retention >= 4 Mths	H2025	UD	00	53	531	534	7/1/2019
N/A	Adv Supp Emplmnt-Job Retention >= 4 Mths-ECS	H2025	UD	U1	53	531	534	7/1/2019
N/A	Supp Emplmnt-Job Finding/Job Development	H2023	00	00	53	530	531	7/1/2019
N/A	Supp Emplmnt-Job Finding/Job Development-ECS	H2023	U1	00	53	530	531	7/1/2019
N/A	Supported Employment - Career Assessment	W7235	00	00	53	530	531	7/1/2019
N/A	Supported Employment - Career Assessment-ECS	W7235	U1	00	53	530	531	7/1/2019
N/A	Chore - Permanent 1 Hour	W7282	00	00	51		431	7/1/2019
N/A	Chore - Permanent 1 Hour	W7282	00	00	51		430	7/1/2019
N/A	Chore - Permanent 1 Hour	W7282	00	00	54		540	7/1/2019
N/A	Chore - Permanent 1 Hour	W7282	00	00	54		541	7/1/2019
N/A	Chore - Permanent 1 Hour U4	W7282	U4	00	54		540	7/1/2019
N/A	Chore, Temporary-1 Hour	W7282	UA	00	51		431	7/1/2019
N/A	Chore, Temporary-1 Hour	W7282	UA	00	51		430	7/1/2019
N/A	Chore, Temporary-1 Hour	W7282	UA	00	54		540	7/1/2019

**APPENDIX B: SERVICES CONSIDERED “NEW” IN HCSIS FOR FISCAL YEAR 2019-2020**

**Uncontracted service offerings will be created for all services in the table below IF the provider is enrolled with the same specialty that is associated with the service as of May 7, 2019. Specialties enrolled after May 7, 2019, will require that providers manually create applicable service offerings. Services highlighted in green below WILL NOT have service offerings created.**

HCSIS Service Name FY 2018/2019	HCSIS Service Name FY 2019/2020	Procedure Code	Mod 1	Mod 2	Provider Type	FY 18-19 Specialty	FY 19-20 Specialty	Effective Date
N/A	Chore, Temporary-1 Hour	W7282	UA	00	54		541	7/1/2019
N/A	Chore, Temporary-1 Hour U4	W7282	UA	U4	54		540	7/1/2019
Homemaker/Chore, Permanent-1 Hour	Homemaker Permanent-1 Hour	W7283	00	00	51	431	431	7/1/2019
Homemaker/Chore, Permanent-1 Hour	Homemaker Permanent-1 Hour	W7283	00	00	51	430	430	7/1/2019
Homemaker/Chore, Permanent-1 Hour	Homemaker Permanent-1 Hour	W7283	00	00	54	540	540	7/1/2019
Homemaker/Chore, Permanent-1 Hour	Homemaker Permanent-1 Hour	W7283	00	00	54	541	541	7/1/2019
Homemaker/Chore, Permanent-1 Hour-U4	Homemaker Permanent-1 Hour U4	W7283	U4	00	54	540	540	7/1/2019
Homemaker/Chore, Temporary-1 Hour	Homemaker Temporary -1 Hour	W7283	UA	00	51	431	431	7/1/2019
Homemaker/Chore, Temporary-1 Hour	Homemaker Temporary -1 Hour	W7283	UA	00	51	430	430	7/1/2019
Homemaker/Chore, Temporary-1 Hour	Homemaker Temporary -1 Hour	W7283	UA	00	54	540	540	7/1/2019
Homemaker/Chore, Temporary-1 Hour	Homemaker Temporary -1 Hour	W7283	UA	00	54	541	541	7/1/2019
Homemaker/Chore, Temporary-1 Hour-U4	Homemaker Temporary -1 Hour-U4	W7283	UA	U4	54	540	540	7/1/2019
N/A	Respite,Non-Waiver/PLF, NG 1	H0045	HE	U5	52		513	7/1/2019

**APPENDIX B: SERVICES CONSIDERED “NEW” IN HCSIS FOR FISCAL YEAR 2019-2020**

**Uncontracted service offerings will be created for all services in the table below IF the provider is enrolled with the same specialty that is associated with the service as of May 7, 2019. Specialties enrolled after May 7, 2019, will require that providers manually create applicable service offerings. Services highlighted in green below WILL NOT have service offerings created.**

HCSIS Service Name FY 2018/2019	HCSIS Service Name FY 2019/2020	Procedure Code	Mod 1	Mod 2	Provider Type	FY 18-19 Specialty	FY 19-20 Specialty	Effective Date
N/A	Respite,Non-Waiver/PLF, NG 2	H0045	HE	U6	52		513	7/1/2019
N/A	Respite,Non-Waiver/PLF, NG 3	H0045	HE	U7	52		513	7/1/2019
N/A	Respite,Non-Waiver/PLF, NG 4	H0045	HE	U8	52		513	7/1/2019
CPS 100% Community with 1:1	CPS Community 1:1	W5996	00	00	51	514	514	7/1/2019
CPS 100% Community with 1:1	CPS Community 1:1	W5996	00	00	51	515	515	7/1/2019
CPS 100% Community with 1:1	CPS Community 1:1	W5996	00	00	51	510	525	7/1/2019
CPS 100% Community with 1:1-ECS	CPS Community 1:1-ECS	W5996	U1	00	51	514	514	7/1/2019
CPS 100% Community with 1:1-ECS	CPS Community 1:1-ECS	W5996	U1	00	51	515	515	7/1/2019
CPS 100% Community with 1:1-ECS	CPS Community 1:1-ECS	W5996	U1	00	51	510	525	7/1/2019
CPS 100% Community with 1:1 (Level 3 Enhanced)	CPS Community 1:1 Enhanced	W5997	00	00	51	514	514	7/1/2019
CPS 100% Community with 1:1 (Level 3 Enhanced)	CPS Community 1:1 Enhanced	W5997	00	00	51	515	515	7/1/2019
CPS 100% Community with 1:1 (Level 3 Enhanced)	CPS Community 1:1 Enhanced	W5997	00	00	51	510	525	7/1/2019
CPS 100% Community with 1:1 (Level 3 Enhanced) ECS	CPS Community 1:1 Enhanced ECS	W5997	U1	00	51	514	514	7/1/2019
CPS 100% Community with 1:1 (Level 3 Enhanced) ECS	CPS Community 1:1 Enhanced ECS	W5997	U1	00	51	515	515	7/1/2019



**APPENDIX B: SERVICES CONSIDERED “NEW” IN HCSIS FOR FISCAL YEAR 2019-2020**

**Uncontracted service offerings will be created for all services in the table below IF the provider is enrolled with the same specialty that is associated with the service as of May 7, 2019. Specialties enrolled after May 7, 2019, will require that providers manually create applicable service offerings. Services highlighted in green below WILL NOT have service offerings created.**

HCSIS Service Name FY 2018/2019	HCSIS Service Name FY 2019/2020	Procedure Code	Mod 1	Mod 2	Provider Type	FY 18-19 Specialty	FY 19-20 Specialty	Effective Date
CPS 100% Community with 1:1 (Level 3 Enhanced) ECS	CPS Community 1:1 Enhanced ECS	W5997	U1	00	51	510	525	7/1/2019
CPS 100% Community with 1:1 (Level 3 Enhcd) LPN	CPS Community 1:1 Enhcd LPN	W5997	TE	00	51	514	514	7/1/2019
CPS 100% Community with 1:1 (Level 3 Enhcd) LPN	CPS Community 1:1 Enhcd LPN	W5997	TE	00	51	515	515	7/1/2019
CPS 100% Community with 1:1 (Level 3 Enhcd) LPN	CPS Community 1:1 Enhcd LPN	W5997	TE	00	51	510	525	7/1/2019
CPS 100% Cmnty with 1:1 (Level 3 Enhcd) LPN-ECS	CPS Community 1:1 Enhcd LPN ECS	W5997	TE	U1	51	514	514	7/1/2019
CPS 100% Cmnty with 1:1 (Level 3 Enhcd) LPN-ECS	CPS Community 1:1 Enhcd LPN ECS	W5997	TE	U1	51	515	515	7/1/2019
CPS 100% Cmnty with 1:1 (Level 3 Enhcd) LPN-ECS	CPS Community 1:1 Enhcd LPN ECS	W5997	TE	U1	51	510	525	7/1/2019
CPS 100% Community with 1:1 (Level 3 Enhanced) RN	CPS Community 1:1 Enhcd RN	W5997	TD	00	51	514	514	7/1/2019
CPS 100% Community with 1:1 (Level 3 Enhanced) RN	CPS Community 1:1 Enhcd RN	W5997	TD	00	51	515	515	7/1/2019
CPS 100% Community with 1:1 (Level 3 Enhanced) RN	CPS Community 1:1 Enhcd RN	W5997	TD	00	51	510	525	7/1/2019
CPS 100% Community with 1:1 (Level 3 Enhcd) RN-ECS	CPS Community 1:1 Enhcd RN ECS	W5997	TD	U1	51	514	514	7/1/2019
CPS 100% Community with 1:1 (Level 3 Enhcd) RN-ECS	CPS Community 1:1 Enhcd RN ECS	W5997	TD	U1	51	515	515	7/1/2019

**APPENDIX B: SERVICES CONSIDERED “NEW” IN HCSIS FOR FISCAL YEAR 2019-2020**

**Uncontracted service offerings will be created for all services in the table below IF the provider is enrolled with the same specialty that is associated with the service as of May 7, 2019. Specialties enrolled after May 7, 2019, will require that providers manually create applicable service offerings. Services highlighted in green below WILL NOT have service offerings created.**

HCSIS Service Name FY 2018/2019	HCSIS Service Name FY 2019/2020	Procedure Code	Mod 1	Mod 2	Provider Type	FY 18-19 Specialty	FY 19-20 Specialty	Effective Date
CPS 100% Community with 1:1 (Level 3 Enhcd) RN-ECS	CPS Community 1:1 Enhcd RN ECS	W5997	TD	U1	51	510	525	7/1/2019
N/A	CPS Community 1:2 or 1:3	W9351	00	00	51		514	7/1/2019
N/A	CPS Community 1:2 or 1:3	W9351	00	00	51		515	7/1/2019
N/A	CPS Community 1:2 or 1:3	W9351	00	00	51		525	7/1/2019
N/A	CPS Community 1:2 or 1:3-ECS	W9351	U1	00	51		514	7/1/2019
N/A	CPS Community 1:2 or 1:3-ECS	W9351	U1	00	51		515	7/1/2019
N/A	CPS Community 1:2 or 1:3-ECS	W9351	U1	00	51		525	7/1/2019
CPS 100% Community with 2:1	CPS Community 2:1	W5993	00	00	51	514	514	7/1/2019
CPS 100% Community with 2:1	CPS Community 2:1	W5993	00	00	51	515	515	7/1/2019
CPS 100% Community with 2:1	CPS Community 2:1	W5993	00	00	51	510	525	7/1/2019
CPS 100% Community with 2:1-ECS	CPS Community 2:1 ECS	W5993	U1	00	51	514	514	7/1/2019
CPS 100% Community with 2:1-ECS	CPS Community 2:1 ECS	W5993	U1	00	51	515	515	7/1/2019
CPS 100% Community with 2:1-ECS	CPS Community 2:1 ECS	W5993	U1	00	51	510	525	7/1/2019
CPS 100% Community with 2:1, (Level 4 Enhanced)	CPS Community 2:1 Enhanced	W5994	00	00	51	514	514	7/1/2019
CPS 100% Community with 2:1, (Level 4 Enhanced)	CPS Community 2:1 Enhanced	W5994	00	00	51	515	515	7/1/2019

**APPENDIX B: SERVICES CONSIDERED “NEW” IN HCSIS FOR FISCAL YEAR 2019-2020**

**Uncontracted service offerings will be created for all services in the table below IF the provider is enrolled with the same specialty that is associated with the service as of May 7, 2019. Specialties enrolled after May 7, 2019, will require that providers manually create applicable service offerings. Services highlighted in green below WILL NOT have service offerings created.**

HCSIS Service Name FY 2018/2019	HCSIS Service Name FY 2019/2020	Procedure Code	Mod 1	Mod 2	Provider Type	FY 18-19 Specialty	FY 19-20 Specialty	Effective Date
CPS 100% Community with 2:1, (Level 4 Enhanced)	CPS Community 2:1 Enhanced	W5994	00	00	51	510	525	7/1/2019
CPS 100% Community with 2:1 (Level 4 Enhanced) ECS	CPS Community 2:1 Enhanced ECS	W5994	U1	00	51	514	514	7/1/2019
CPS 100% Community with 2:1 (Level 4 Enhanced) ECS	CPS Community 2:1 Enhanced ECS	W5994	U1	00	51	515	515	7/1/2019
CPS 100% Community with 2:1 (Level 4 Enhanced) ECS	CPS Community 2:1 Enhanced ECS	W5994	U1	00	51	510	525	7/1/2019
CPS 100% Community with 2:1, (Level 4 Enhcd) LPN	CPS Community 2:1 Enhcd LPN	W5994	TE	00	51	514	514	7/1/2019
CPS 100% Community with 2:1, (Level 4 Enhcd) LPN	CPS Community 2:1 Enhcd LPN	W5994	TE	00	51	515	515	7/1/2019
CPS 100% Community with 2:1, (Level 4 Enhcd) LPN	CPS Community 2:1 Enhcd LPN	W5994	TE	00	51	510	525	7/1/2019
CPS 100% Cmnty with 2:1 (Level 4 Enhcd) LPN-ECS	CPS Community 2:1 Enhcd LPN ECS	W5994	TE	U1	51	514	514	7/1/2019
CPS 100% Cmnty with 2:1 (Level 4 Enhcd) LPN-ECS	CPS Community 2:1 Enhcd LPN ECS	W5994	TE	U1	51	515	515	7/1/2019
CPS 100% Cmnty with 2:1 (Level 4 Enhcd) LPN-ECS	CPS Community 2:1 Enhcd LPN ECS	W5994	TE	U1	51	510	525	7/1/2019
CPS 100% Community with 2:1, (Level 4 Enhanced) RN	CPS Community 2:1 Enhcd RN	W5994	TD	00	51	514	514	7/1/2019
CPS 100% Community with 2:1, (Level 4 Enhanced) RN	CPS Community 2:1 Enhcd RN	W5994	TD	00	51	515	515	7/1/2019

**APPENDIX B: SERVICES CONSIDERED “NEW” IN HCSIS FOR FISCAL YEAR 2019-2020**

**Uncontracted service offerings will be created for all services in the table below IF the provider is enrolled with the same specialty that is associated with the service as of May 7, 2019. Specialties enrolled after May 7, 2019, will require that providers manually create applicable service offerings. Services highlighted in green below WILL NOT have service offerings created.**

HCSIS Service Name FY 2018/2019	HCSIS Service Name FY 2019/2020	Procedure Code	Mod 1	Mod 2	Provider Type	FY 18-19 Specialty	FY 19-20 Specialty	Effective Date
CPS 100% Community with 2:1, (Level 4 Enhanced) RN	CPS Community 2:1 Enhcd RN	W5994	TD	00	51	510	525	7/1/2019
CPS 100% Community with 2:1 (Level 4 Enhcd) RN-ECS	CPS Community 2:1 Enhcd RN ECS	W5994	TD	U1	51	514	514	7/1/2019
CPS 100% Community with 2:1 (Level 4 Enhcd) RN-ECS	CPS Community 2:1 Enhcd RN ECS	W5994	TD	U1	51	515	515	7/1/2019
CPS 100% Community with 2:1 (Level 4 Enhcd) RN-ECS	CPS Community 2:1 Enhcd RN ECS	W5994	TD	U1	51	510	525	7/1/2019
N/A	CPS Community 2:3	W9352	00	00	51		514	7/1/2019
N/A	CPS Community 2:3	W9352	00	00	51		515	7/1/2019
N/A	CPS Community 2:3	W9352	00	00	51		525	7/1/2019
N/A	CPS Community 2:3-ECS	W9352	U1	00	51		514	7/1/2019
N/A	CPS Community 2:3-ECS	W9352	U1	00	51		515	7/1/2019
N/A	CPS Community 2:3-ECS	W9352	U1	00	51		525	7/1/2019
N/A	CPS: Community OnCall/Remote Support	W9400	00	00	51		514	10/1/2019
N/A	CPS: Community OnCall/Remote Support	W9400	00	00	51		515	10/1/2019
N/A	CPS: Community OnCall/Remote Support	W9400	00	00	51		525	10/1/2019
N/A	CPS: Community OnCall/Remote Support-ECS	W9400	U1	00	51		514	10/1/2019
N/A	CPS: Community OnCall/Remote Support-ECS	W9400	U1	00	51		515	10/1/2019

**APPENDIX B: SERVICES CONSIDERED “NEW” IN HCSIS FOR FISCAL YEAR 2019-2020**

**Uncontracted service offerings will be created for all services in the table below IF the provider is enrolled with the same specialty that is associated with the service as of May 7, 2019. Specialties enrolled after May 7, 2019, will require that providers manually create applicable service offerings. Services highlighted in green below WILL NOT have service offerings created.**

HCSIS Service Name FY 2018/2019	HCSIS Service Name FY 2019/2020	Procedure Code	Mod 1	Mod 2	Provider Type	FY 18-19 Specialty	FY 19-20 Specialty	Effective Date
N/A	CPS: Community OnCall/Remote Support-ECS	W9400	U1	00	51		525	10/1/2019
N/A	CPS Facility 1:1	W7244	00	00	51		515	7/1/2019
N/A	CPS Facility 1:1	W7244	00	00	51		514	7/1/2019
N/A	CPS Facility 1:1-ECS	W7244	U1	00	51		514	7/1/2019
N/A	CPS Facility 1:1-ECS	W7244	U1	00	51		515	7/1/2019
N/A	CPS Facility 1:1 Enhanced	W9353	00	00	51		514	7/1/2019
N/A	CPS Facility 1:1 Enhanced	W9353	00	00	51		515	7/1/2019
N/A	CPS Facility 1:1 Enhanced ECS	W9353	U1	00	51		514	7/1/2019
N/A	CPS Facility 1:1 Enhanced ECS	W9353	U1	00	51		515	7/1/2019
N/A	CPS Facility 1:1 Enhcd LPN	W9353	TE	00	51		514	7/1/2019
N/A	CPS Facility 1:1 Enhcd LPN	W9353	TE	00	51		515	7/1/2019
N/A	CPS Facility 1:1 Enhcd LPN-ECS	W9353	TE	U1	51		514	7/1/2019
N/A	CPS Facility 1:1 Enhcd LPN-ECS	W9353	TE	U1	51		515	7/1/2019
N/A	CPS Facility 1:1 Enhcd RN	W9353	TD	00	51		514	7/1/2019
N/A	CPS Facility 1:1 Enhcd RN	W9353	TD	00	51		515	7/1/2019
N/A	CPS Facility 1:1 Enhcd RN-ECS	W9353	TD	U1	51		514	7/1/2019
N/A	CPS Facility 1:1 Enhcd RN-ECS	W9353	TD	U1	51		515	7/1/2019
N/A	CPS Facility 1:11 to 1:15	W7222	00	00	51		514	7/1/2019
N/A	CPS Facility 1:11 to 1:15	W7222	00	00	51		515	7/1/2019
N/A	CPS Facility 1:11 to 1:15-ECS	W7222	U1	00	51		514	7/1/2019

**APPENDIX B: SERVICES CONSIDERED “NEW” IN HCSIS FOR FISCAL YEAR 2019-2020**

**Uncontracted service offerings will be created for all services in the table below IF the provider is enrolled with the same specialty that is associated with the service as of May 7, 2019. Specialties enrolled after May 7, 2019, will require that providers manually create applicable service offerings. Services highlighted in green below WILL NOT have service offerings created.**

HCSIS Service Name FY 2018/2019	HCSIS Service Name FY 2019/2020	Procedure Code	Mod 1	Mod 2	Provider Type	FY 18-19 Specialty	FY 19-20 Specialty	Effective Date
N/A	CPS Facility 1:11 to 1:15-ECS	W7222	U1	00	51		515	7/1/2019
N/A	CPS Facility 1:2 to 1:3	W7224	00	00	51		514	7/1/2019
N/A	CPS Facility 1:2 to 1:3	W7224	00	00	51		515	7/1/2019
N/A	CPS Facility 1:2 to 1:3 - ECS	W7224	U1	00	51		514	7/1/2019
N/A	CPS Facility 1:2 to 1:3 - ECS	W7224	U1	00	51		515	7/1/2019
N/A	CPS Facility 1:4 to 1:6	W7226	00	00	51		514	7/1/2019
N/A	CPS Facility 1:4 to 1:6	W7226	00	00	51		515	7/1/2019
N/A	CPS Facility 1:4 to 1:6 - ECS	W7226	U1	00	51		514	7/1/2019
N/A	CPS Facility 1:4 to 1:6 - ECS	W7226	U1	00	51		515	7/1/2019
N/A	CPS Facility 1:7 to 1:10	W7223	00	00	51		514	7/1/2019
N/A	CPS Facility 1:7 to 1:10	W7223	00	00	51		515	7/1/2019
N/A	CPS Facility 1:7 to 1:10-ECS	W7223	U1	00	51		514	7/1/2019
N/A	CPS Facility 1:7 to 1:10-ECS	W7223	U1	00	51		515	7/1/2019
N/A	CPS Facility 2:1	W7269	00	00	51		514	7/1/2019
N/A	CPS Facility 2:1	W7269	00	00	51		515	7/1/2019
N/A	CPS Facility 2:1-ECS	W7269	U1	00	51		514	7/1/2019
N/A	CPS Facility 2:1-ECS	W7269	U1	00	51		515	7/1/2019
N/A	CPS Facility 2:1 Enhanced	W9356	00	00	51		514	7/1/2019
N/A	CPS Facility 2:1 Enhanced	W9356	00	00	51		515	7/1/2019
N/A	CPS Facility 2:1 Enhanced ECS	W9356	U1	00	51		514	7/1/2019
N/A	CPS Facility 2:1 Enhanced ECS	W9356	U1	00	51		515	7/1/2019
N/A	CPS Facility 2:1 Enhcd LPN	W9356	TE	00	51		514	7/1/2019
N/A	CPS Facility 2:1 Enhcd LPN	W9356	TE	00	51		515	7/1/2019
N/A	CPS Facility 2:1 Enhcd LPN ECS	W9356	TE	U1	51		514	7/1/2019
N/A	CPS Facility 2:1 Enhcd LPN ECS	W9356	TE	U1	51		515	7/1/2019

**APPENDIX B: SERVICES CONSIDERED “NEW” IN HCSIS FOR FISCAL YEAR 2019-2020**

---

**Uncontracted service offerings will be created for all services in the table below IF the provider is enrolled with the same specialty that is associated with the service as of May 7, 2019. Specialties enrolled after May 7, 2019, will require that providers manually create applicable service offerings. Services highlighted in green below WILL NOT have service offerings created.**

HCSIS Service Name FY 2018/2019	HCSIS Service Name FY 2019/2020	Procedure Code	Mod 1	Mod 2	Provider Type	FY 18-19 Specialty	FY 19-20 Specialty	Effective Date
N/A	CPS Facility 2:1 Enhcd RN	W9356	TD	00	51		514	7/1/2019
N/A	CPS Facility 2:1 Enhcd RN	W9356	TD	00	51		515	7/1/2019
N/A	CPS Facility 2:1 Enhcd RN ECS	W9356	TD	U1	51		514	7/1/2019
N/A	CPS Facility 2:1 Enhcd RN ECS	W9356	TD	U1	51		515	7/1/2019

**APPENDIX C: EMPLOYMENT SERVICES SPECIALTY CHANGES FOR FY 2019-2020**

---

HCSIS SERVICE NAME	PROCEDURE CODE	MOD 1	MOD 2	PT	FY 2018-2019 SPECIALTY	FY 2019-2020 SPECIALTY
Adv Supp Emplmnt-Discovery	W7235	UD	0	53	530	534
Adv Supp Emplmnt-Discovery-ECS	W7235	UD	U1	53	530	534
Adv Supp Emplmnt-Job Acquisition	H2023	UD	0	53	530	534
Adv Supp Emplmnt-Job Acquisition-ECS	H2023	UD	U1	53	530	534
Adv Supp Emplmnt-Job Retention >= 4 Mths	H2025	UD	0	53	531	534
Adv Supp Emplmnt-Job Retention >= 4 Mths-ECS	H2025	UD	U1	53	531	534
Benefits Counseling	W1740	SE	0	53	530	530
Benefits Counseling	W1740	SE	0	53	534	530
Benefits Counseling-ECS	W1740	SE	U1	53	530	530
Benefits Counseling-ECS	W1740	SE	U1	53	534	530
Supp Emplmnt-Job Finding/Job Development	H2023	0	0	53	530	531
Supp Emplmnt-Job Finding/Job Development-ECS	H2023	U1	0	53	530	531
Supported Employment - Career Assessment	W7235	0	0	53	530	531
Supported Employment - Career Assessment-ECS	W7235	U1	0	53	530	531
Supported Emplmnt-Job Support - 1:1	W9794	0	0	53	531	531
Supported Emplmnt-Job Support - 1:1 - ECS	W9794	U1	0	53	531	531
Supported Emplmnt-Job Support-1:2	H2025	0	0	53	531	531
Supported Emplmnt-Job Support-1:2-ECS	H2025	U1	0	53	531	531