

e-CIS Business Partner Access Key Registration Dates

ODP Announcement 19-110

AUDIENCE:

Administrative Entities (AEs), County Joinder Organizations, Delegated Administrators, Individual Users for ODP Program Offices

PURPOSE:

To provide key dates in the e-CIS Business Partner Access registration and rollout process.

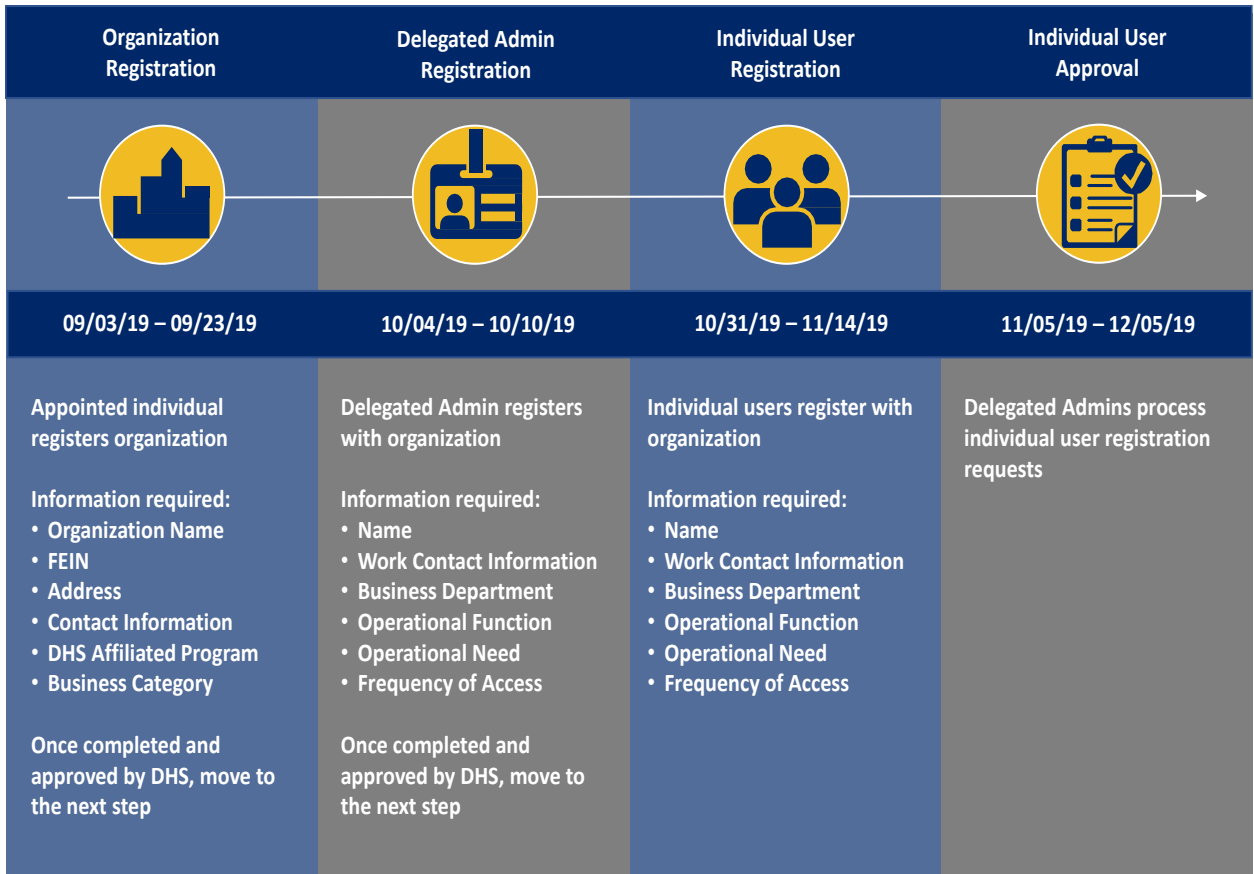
DISCUSSION:

Registration is coming September 3rd!

As a reminder, the Department of Human Services is moving from CIS to a different system (eCIS) for viewing client data. Registration for eCIS access will begin on September 3, 2019 and is a four-step process that must be completed in order to ensure there is no lapse in access to DHS data.

How to Register

Once registration is open, follow the [instructions](#) to register. We encourage you to complete each step within the date range designated in the chart below as relevant to your role; as you are unable to move to the following steps until this is completed.



Next Steps

A direct link to the registration tool will be emailed to you when registration is open. For more information or if you have questions, please contact RA-PWECIS-ODP@pa.gov.